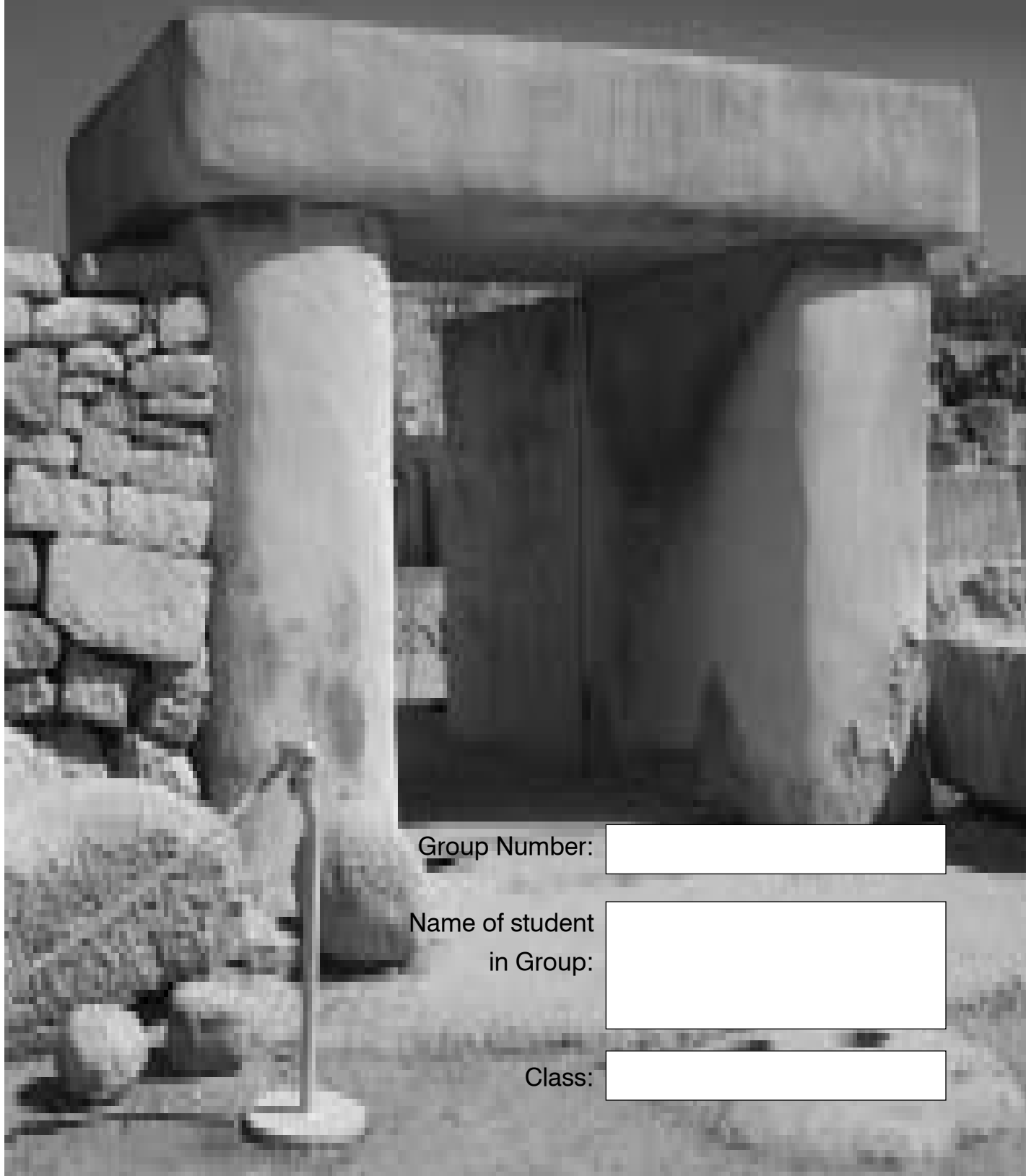


The Tarxien Temples



Group Number:

Name of student
in Group:

Class:

The Tarxien Temples



1. Look on the ground. There are objects which look like stone balls. Some people say that these were used to move the larger boulders on. Think a bit and then suggest something else they might have been.

The Tarxien Temples

2. Go near the part of the Temple shown in this photo.



Some archaeologist say that some burning took place in this Temple.
Do you agree with them? Why?

The Tarxien Temples

3. Find the objects shown in the following pictures. Say what you think each one might have been. Why do you think this?





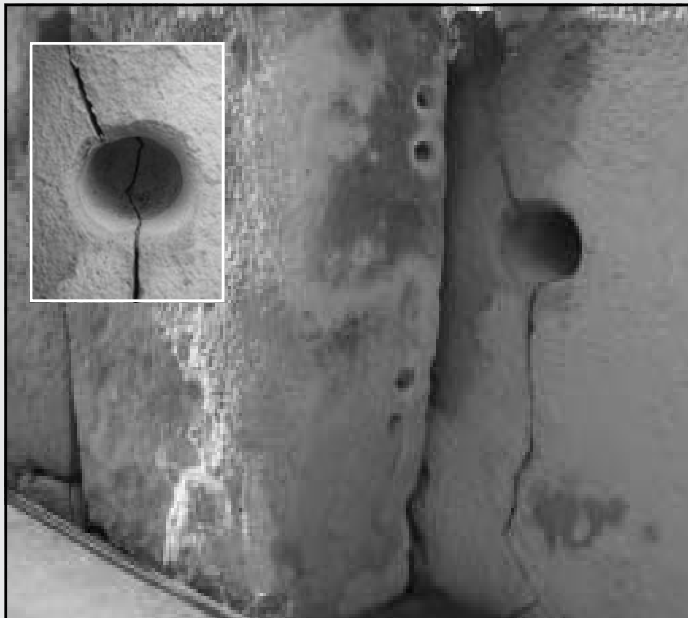




The Tarxien Temples

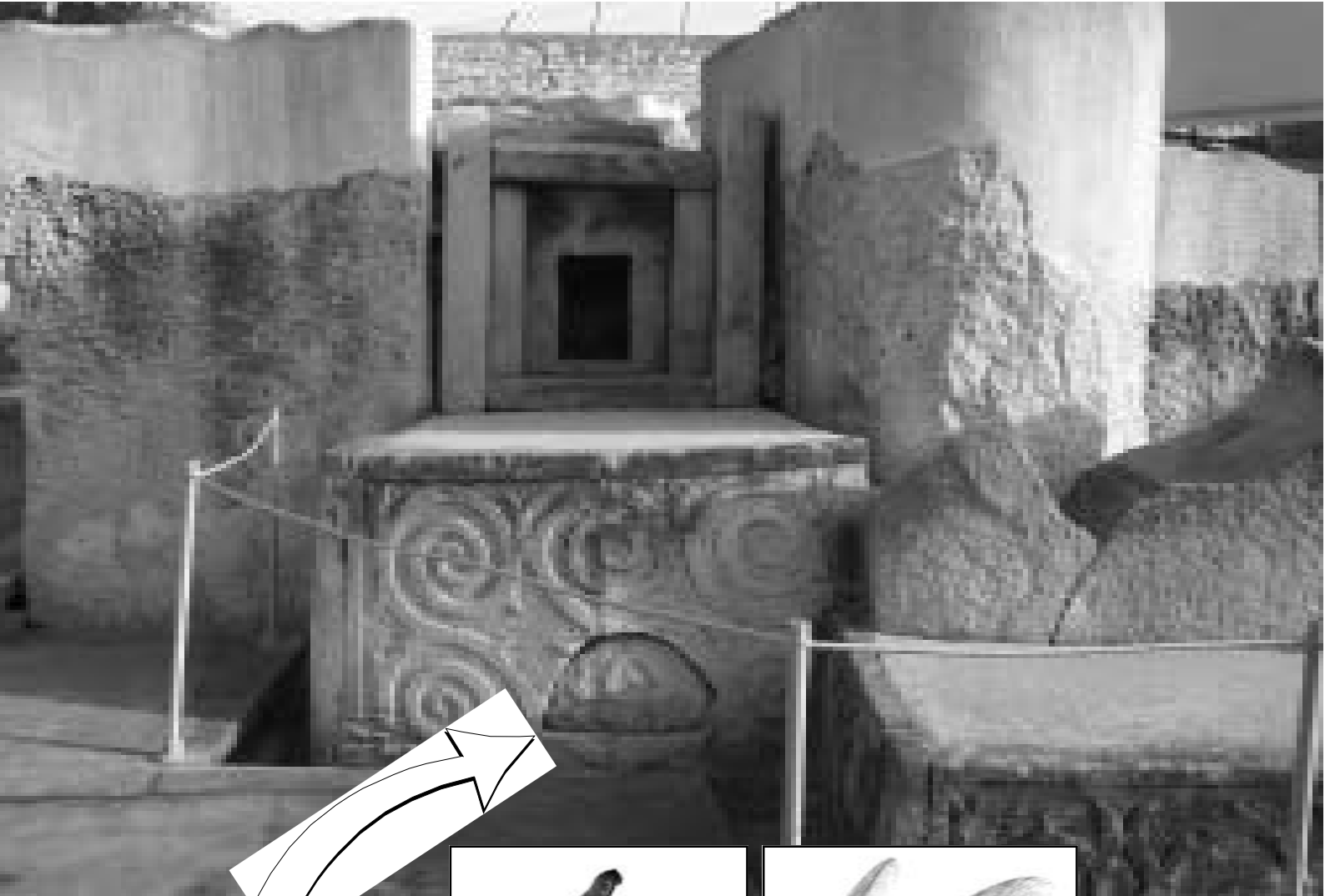






The Tarxien Temples

4. Go near the object shown in this photo.



These stone knives and bones were found in here.



These objects suggest that this was some kind of altar. Why?

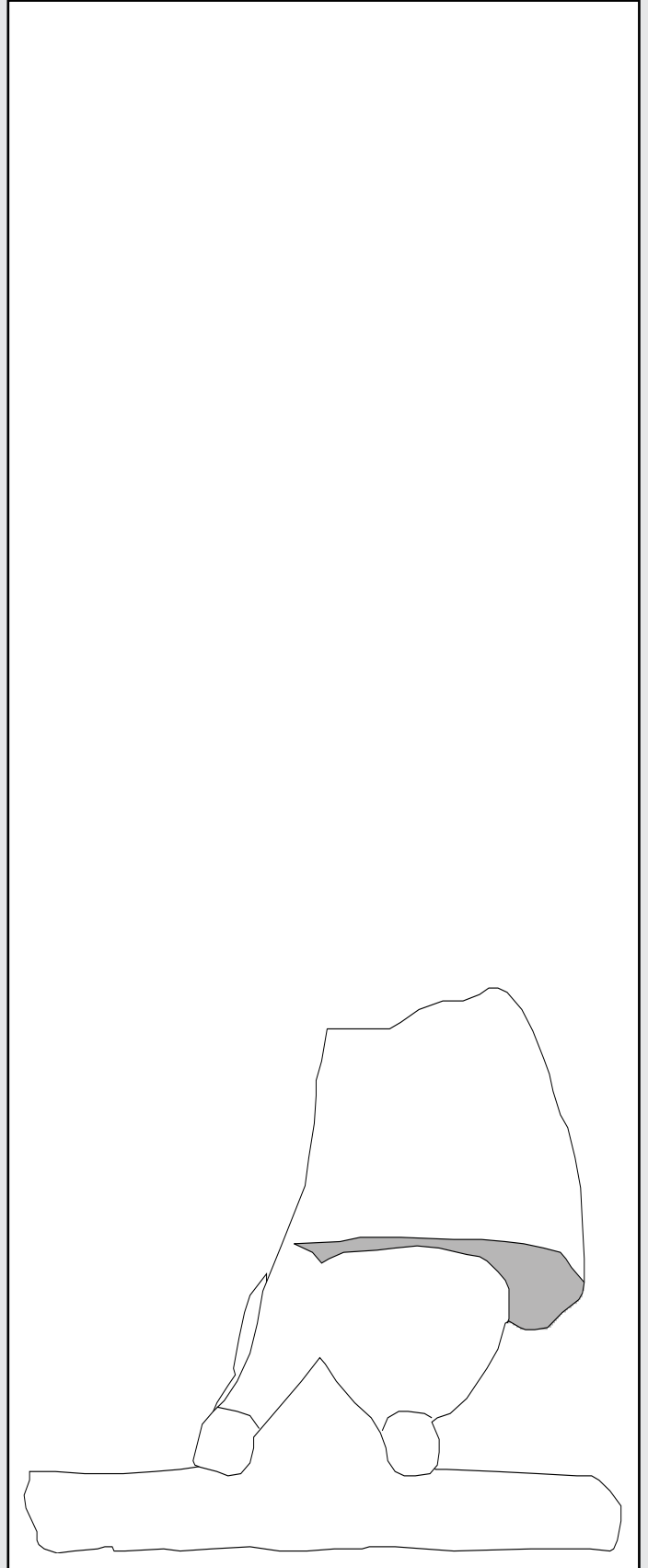
The Tarxien Temples



5. This is not the original statue. The original one is found at the National Museum of Archaeology in Valletta and is shown in the photo below.



Try to imagine what it might have looked like when it was whole and then continue the drawing.



The Tarxien Temples

6. Look carefully at the designs of spirals animals which can be seen on these stones and then try and draw them in the boxes.



A large, empty rectangular box provided for drawing the spiral designs from the first image.



A large, empty rectangular box provided for drawing the spiral designs from the second image.

The Tarxien Temples



7. Find these carvings of a bull and sow with piglets. Look at it well and say why you think these two particular animals were chosen to be drawn.

The Tarxien Temples

- 8.** From all the things you have seen and worked on in this Temple, write five things you can say about the people who built it.

- 9.** Some archaeologists call this building a Temple. Give one reason why you think they call it so.

If this building was not in fact a Temple, what do you think it might have been?

The Tarxien Temples



10. This Temple was built 5000 years ago. It was used by many people who came after the ones who built it. What do you think it was used for?



L-Ewwel Edizzjoni: ??????????????????

© Dr Yosanne Vella
© Pubblikazzjoni tal-Kummissjoni Nazzjonali Maltija tal-UNESCO

Il-jeddijiet kollha miżmuma. Dan il-ktieb qed jinbiegħ bil-kundizzjoni li ma jistax jinsile, jerga' jinbiegħ jew jinghata b'xejn f'xi għamla oħra jew legatura ħlief kif inhu ppublikat. Ma jista' jseħh fih ebda tibdil. Ebda silta minn dan il-ktieb ma tista' tkun ippublikata jew maħruġa f' mod fotostatiku, elettroniku, mekkaniku, irrekordjat jew b'xi mod ieħor mingħajr il-permess ta' l-awtur.

Editur ġenerali tas-Serje: Prof. Charles Farrugia
Awtur u Kreatur tal-Proġett: Dr Yosanne Vella
Disinn: Outlook Coop - Malta

Proġett tal-Kummissjoni Nazzjonali Maltija tal-UNESCO f'kollaborazzjoni ma' Heritage Malta.

ISBN: ??????????????????